

GENERAL NOTES:

A. FOR A LIST OF GENERAL PLUMBING NOTES; REFER TO PLUMBING SCHEDULES AND NOTES DRAWING, SHEET P-4.2

KEY NOTES:

- 1. LOCATIONS SHOWN FOR EXISTING PIPING ARE APPROXIMATE. CONTRACTOR SHALL FIELD VERIFY LOCATION, SIZE, AND DEPTH OF PIPING. IF EXISTING PIPING IS AT LOCATIONS OTHER THAN THAT SHOWN, IT SHALL BE CONTRACTORS RESPONSIBILITY TO MAKE NECESSARY ADJUSTMENTS AND ROUGH-INS AND TO PROVIDE SERVICE AND CONNECTIONS REQUIRED.
- 2. VERIFY LOCATION AND DEPTH OF EXISTING UNDERGROUND UTILITIES PRIOR TO INSTALLING GREASE INTERCEPTOR.

LEGEND	
---	EXISTING WATER LINE
---	EXISTING NAT. GAS LINE
---	EXISTING SANITARY SEWER LINE
---	EXISTING STORM SEWER LINE

PLUMBING CONTRACTOR SHALL COORDINATE DOMESTIC WATER AND SANITARY SEWER LINES DIRECTION OF FLOW, SIZE AND POINT OF CONNECTION WITH CIVIL PLANS PRIOR TO INSTALLATION OF ROUGH-IN TO AVOID CONFLICT. ANY DISCREPANCIES FOUND BY THE PLUMBING CONTRACTOR SHALL BE REPORTED TO THE ENGINEER/ARCHITECT IMMEDIATELY AND PRIOR TO ANY INSTALLATION. FAILURE TO COMPLY SHALL MAKE ALL CORRECTIONS AND/OR MODIFICATIONS THE FULL RESPONSIBILITY OF THE CONTRACTOR.

INFORMATION ON THIS SHEET HAS BEEN TAKEN FROM RECORD DRAWINGS AND SITE SURVEY. CONTRACTOR SHALL FIELD VERIFY ALL EXISTING CONDITIONS BEFORE COMMENCING WORK AND REPORT ANY AND ALL DISCREPANCIES BETWEEN ACTUAL CONDITIONS AND THESE PLANS TO THE ENGINEER/ARCHITECT IMMEDIATELY.

01 PLUMBING SITE PLAN
SCALE: 1"=10'-0"

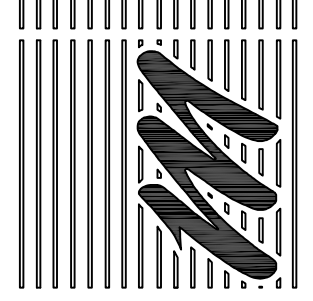
REVISIONS

Harlingen, TX

The Reese
Phase I
202 S. 1st. Street

PLUMBING
SITE PLAN

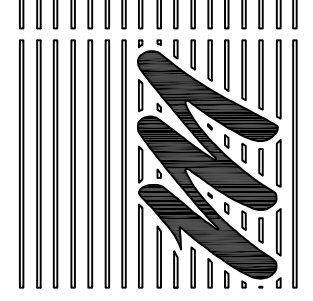
MEGAMORPHOSIS
ARCHITECTURE & INTERIOR DESIGN
1409 N. STUART PLACE RD., SUITE D
PHONE # (956) 428-1179 FAX # (956) 425-5886



PROJECT #
27074
MAR. 26, 2010
PS-1.0

HALFF
5000 WEST MILITARY, SUITE 100
McALLEN, TEXAS 78503
TEL (956) 664-0286
FAX (956) 664-0282
Halff Associates firm registration number is 312

100% PRICING SET

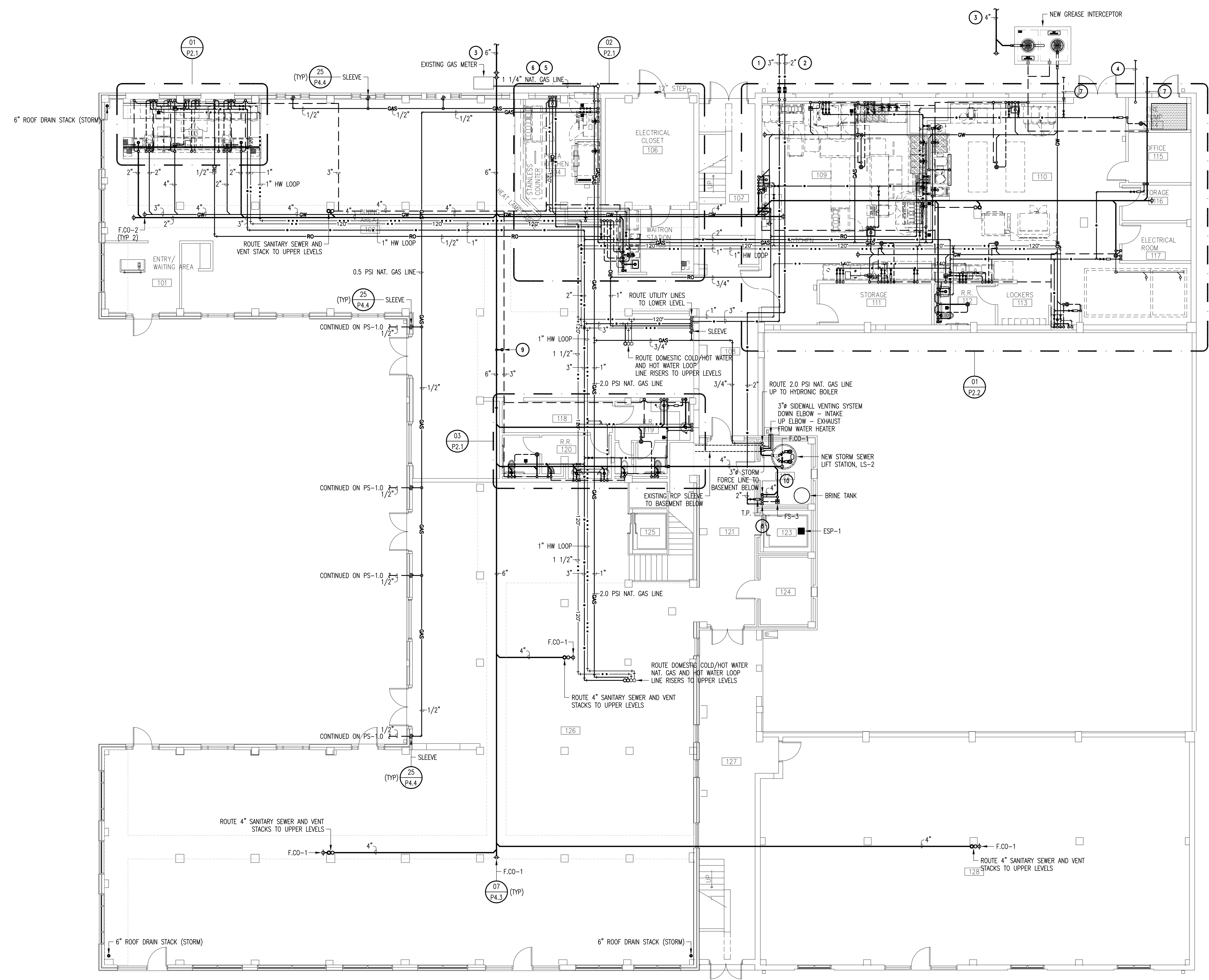


GENERAL NOTES:

A. FOR A LIST OF GENERAL PLUMBING NOTES, REFER TO PLUMBING SCHEDULES AND NOTES DRAWING, SHEET P-4.2

KEY NOTES: O

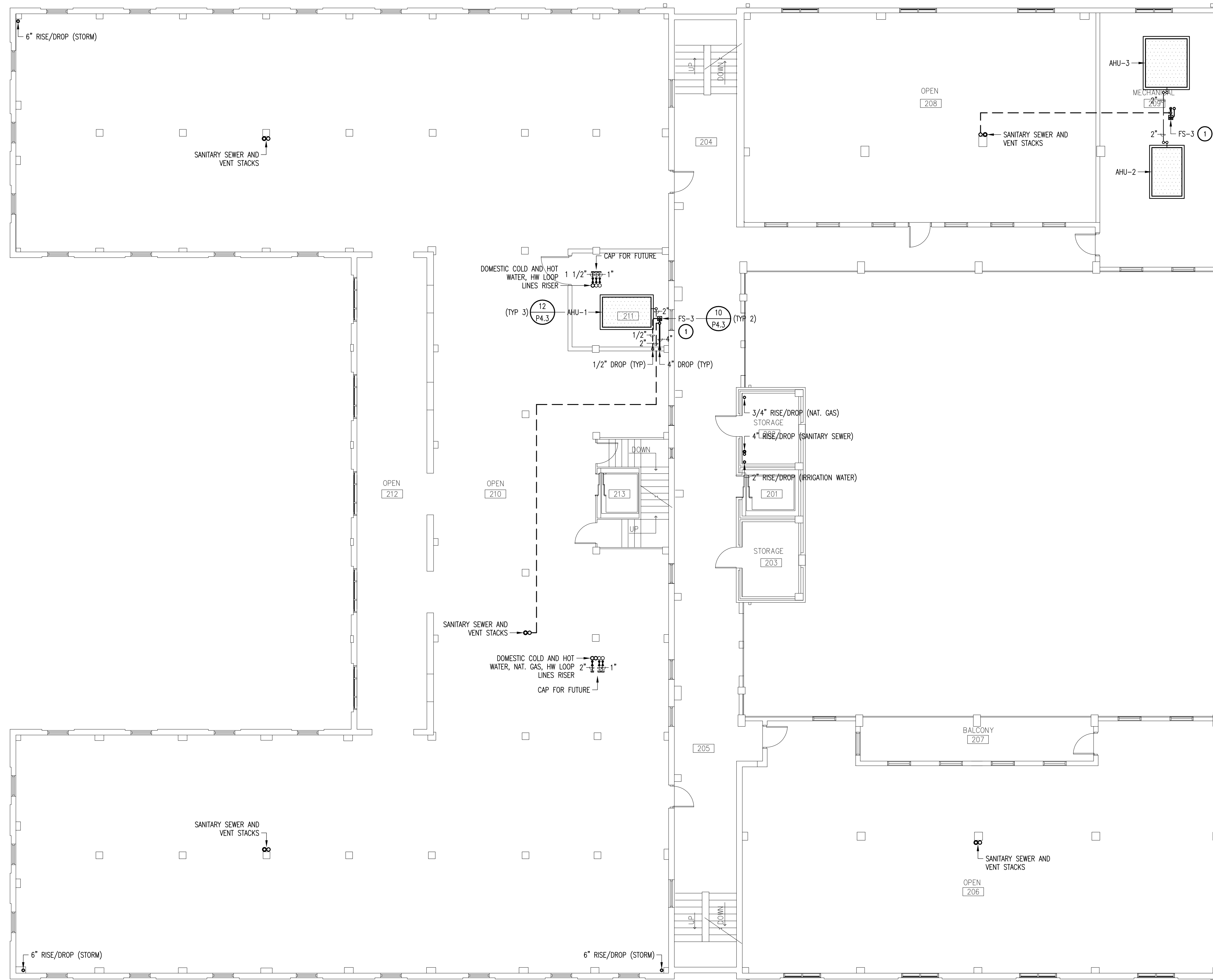
1. NEW 3" DOMESTIC WATER LINE. PLUMBING CONTRACTOR SHALL VERIFY EXISTING WATER PRESSURE AND LOCATIONS PRIOR TO CONNECTION, AND GENERAL CONTRACTOR SHALL CONTACT CITY WATER DEPARTMENT PRIOR TO TAP.
2. NEW 2" IRRIGATION WATER LINE. PLUMBING CONTRACTOR SHALL VERIFY EXISTING WATER PRESSURE AND LOCATIONS PRIOR TO CONNECTION, AND GENERAL CONTRACTOR SHALL CONTACT CITY WATER DEPARTMENT PRIOR TO TAP.
3. NEW 4" AND 6" SANITARY SEWER LINES. PLUMBING CONTRACTOR SHALL VERIFY EXISTING SANITARY SEWER LOCATION, INVERT SLOPE, ELEVATION AND DIRECTION OF FLOW PRIOR TO INSTALLING SANITARY SEWER LINES, AND GENERAL CONTRACTOR SHALL CONTACT CITY WASTE WATER DEPARTMENT PRIOR TO TAP.
4. PROPOSED FIRE SPRINKLER SERVICE LINE LOCATION. LINES SIZES AND OTHER DESIGN REQUIREMENTS SHALL BE DETERMINED BY A LICENSED FIRE PROTECTION SPECIALIST.
5. NEW 1 1/4" NATURAL GAS LINE. PLUMBING CONTRACTOR SHALL VERIFY EXISTING GAS PRESSURE PRIOR TO CONNECTION, AND GENERAL CONTRACTOR SHALL CONTACT CITY GAS DEPARTMENT PRIOR TO TAP. ALL UNDERGROUND NATURAL GAS PIPE SHALL BE POLYETHYLENE TYPE, TRANSITION TO SCHEDULE 40 BLACK AT RISER. REFER TO DETAIL 22/P4.4
6. NATURAL GAS ESTIMATED DEMAND 3,758,000 MMB AT BUILDING. REFER TO GAS RISER DIAGRAM 02/P3.2
0.5 PSI NAT. GAS SYSTEM - FIRST FLOOR
KITCHEN EQUIPMENT = 1,766,000 MBH
LANTERNS = 2,080 MBH (EA)
0.5 PSI NAT. GAS SYSTEM - FOURTH AND FIFTH FLOOR CONDOS
RANGE = 30,000 MBH (EA)
FIREPLACE = 36,000 MBH (EA)
2.0 PSI NAT. GAS SYSTEM - BASEMENT AND PENTHOUSE
BASEMENT CONDENSING BOILER = 199,999 MBH
PENTHOUSE HYDRONIC BOILER = 1,000,000 MBH
7. ROUTE 4" SANITARY SEWER AND 1/2" WATER LINES TO DUMPSTER.
8. LOCATE BOOSTER PUMP (BP-2) ON RISER; CONTINUE 2" MAKE-UP WATER LINE UP TO COOLING TOWER.
9. 2" SANITARY SEWER FROM LIFT STATION LS-1 AT BASEMENT.
10. ROUTE 4" SEWER AND 2" VENT LINE STACKS TO UPPER LEVELS.



01 FIRST FLOOR - PLUMBING PLAN
SCALE: 1/8" = 1'-0"

HALFF
5000 WEST MILITARY, SUITE 100
McALLEN, TEXAS 78503
TEL (956) 664-0286
FAX (956) 664-0282
Half Associates firm registration number is 312

100% PRICING SET



GENERAL NOTES:

A. FOR A LIST OF GENERAL PLUMBING NOTES, REFER TO PLUMBING SCHEDULES AND NOTES DRAWING, SHEET P-4.2

KEY NOTES: O

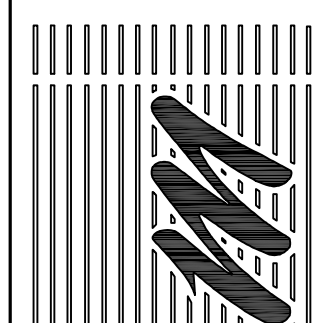
1. ROUTE CONDENSATE DRAIN LINES, FROM A/C EQUIPMENT, AND EXTEND INDIRECT WASTE LINE AND DROP INTO FLOOR SINK.

REVISIONS

The Reese
Phase I
202 S. 1st. Street
Harlingen, TX

**SECOND FLOOR
PLUMBING PLAN**

MEGAMORPHOSIS
ARCHITECTURE & INTERIOR DESIGN
1409 N. STUART PLACE RD., SUITE D
PHONE # (956) 428-1779 FAX # (956) 425-5886



PROJECT #
27074
MAR. 26, 2010

P-1.2

HALFF
5000 WEST MILITARY, SUITE 100
McALLEN, TEXAS 78503
TEL (956) 664-0286
FAX (956) 664-0282
Half Associates firm registration number is 312

100% PRICING SET

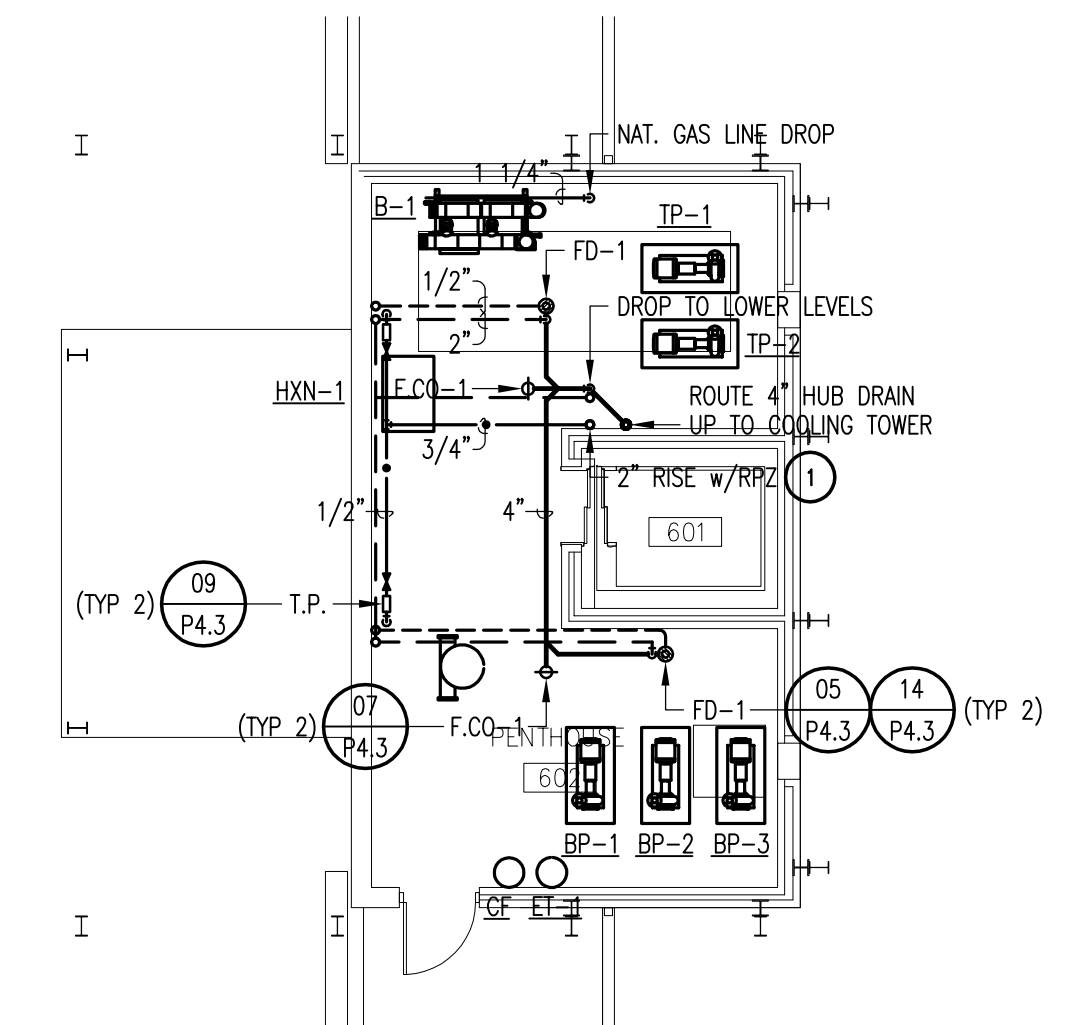
01 SECOND FLOOR - PLUMBING PLAN
SCALE: 1/8" = 1'-0"

GENERAL NOTES:

A. FOR A LIST OF GENERAL PLUMBING NOTES; REFER TO PLUMBING SCHEDULES AND AND NOTES DRAWING, SHEET P-4.2

KEY NOTES: O

1. LOCATE REDUCED PRESSURE PRINCIPLE BACKFLOW PREVENTOR IN THE RISER AT PENTHOUSE LEVEL. REFER TO DETAIL 17/P4.3



PENTHOUSE PLUMBING PLAN
SCALE: 1/8" = 1'-0"

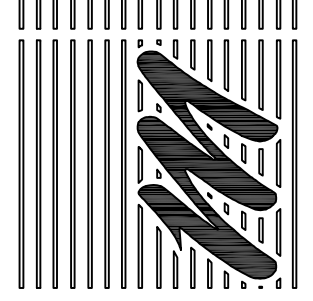
THIRD THRU FIFTH FLOOR - PLUMBING PLAN
SCALE: 1/8" = 1'-0"

REVISIONS

The Reese Phase I
202 S. 1st. Street
Harlingen, TX

THIRD - FIFTH FLOOR PLUMBING PLAN

MEGAMORPHOSIS
ARCHITECTURE & INTERIOR DESIGN
1419 N. STUART PLACE RD., SUITE D
PHONE # (956) 428-1779 FAX # (956) 425-5886



PROJECT #
27074
MAR. 26, 2010

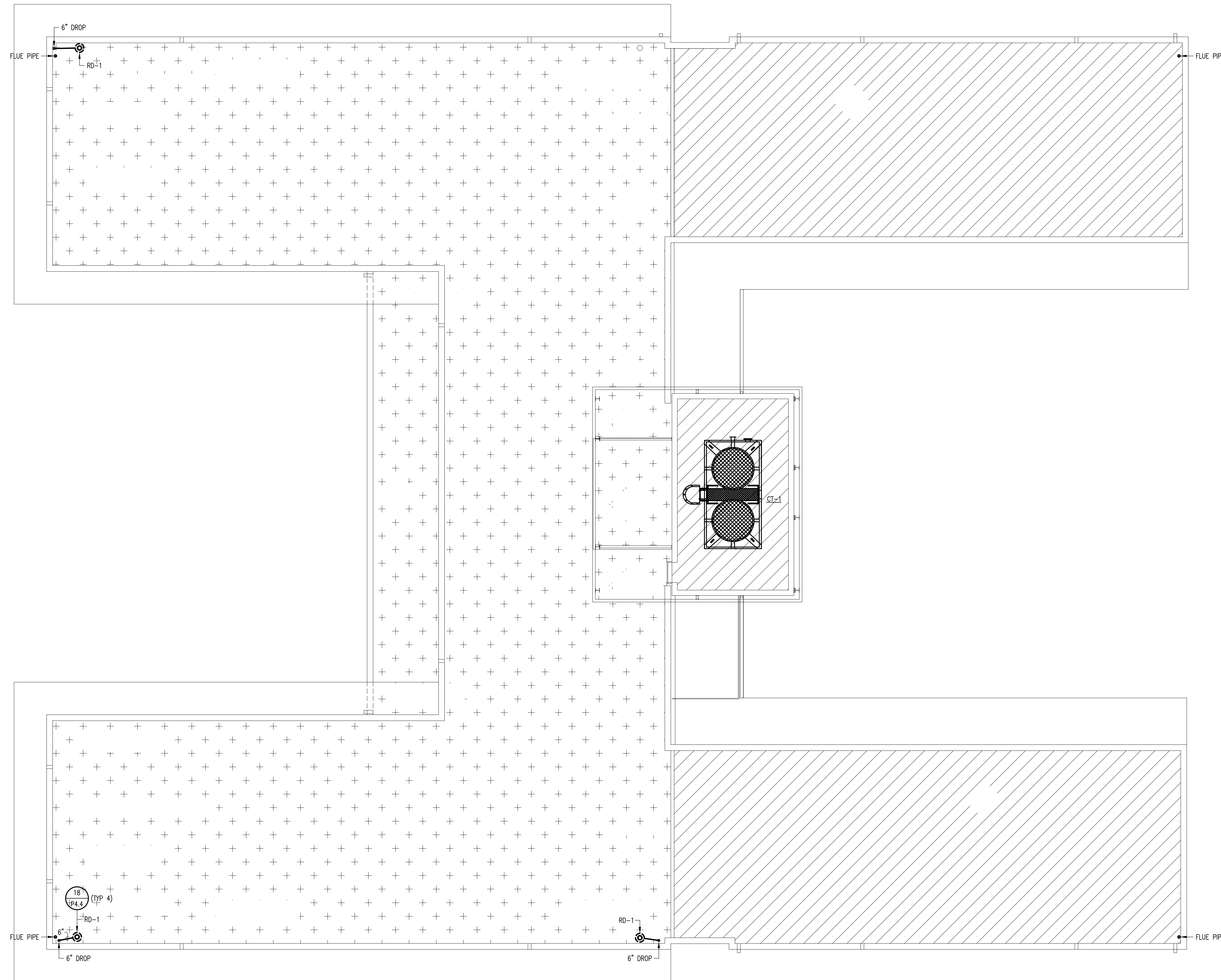
P-1.3

HALFF
5000 WEST MILITARY, SUITE 100
McALLEN, TEXAS 78503
TEL (956) 664-0286
FAX (956) 664-0282
Half Associates firm registration number is 312

100% PRICING SET

GENERAL NOTES:

A. FOR A LIST OF GENERAL PLUMBING NOTES, REFER TO PLUMBING SCHEDULES AND NOTES DRAWING, SHEET P-4.2



01 ROOF - PLUMBING PLAN
SCALE: 1/8" = 1'-0"

HALFF
5000 WEST MILITARY, SUITE 100
McALLEN, TEXAS 78503
TEL (956) 664-0286
FAX (956) 664-0282
Halff Associates firm registration number is 312

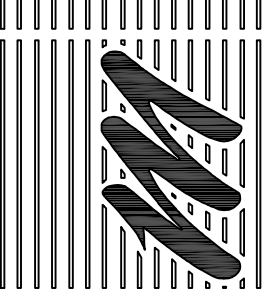
100% PRICING SET

REVISIONS

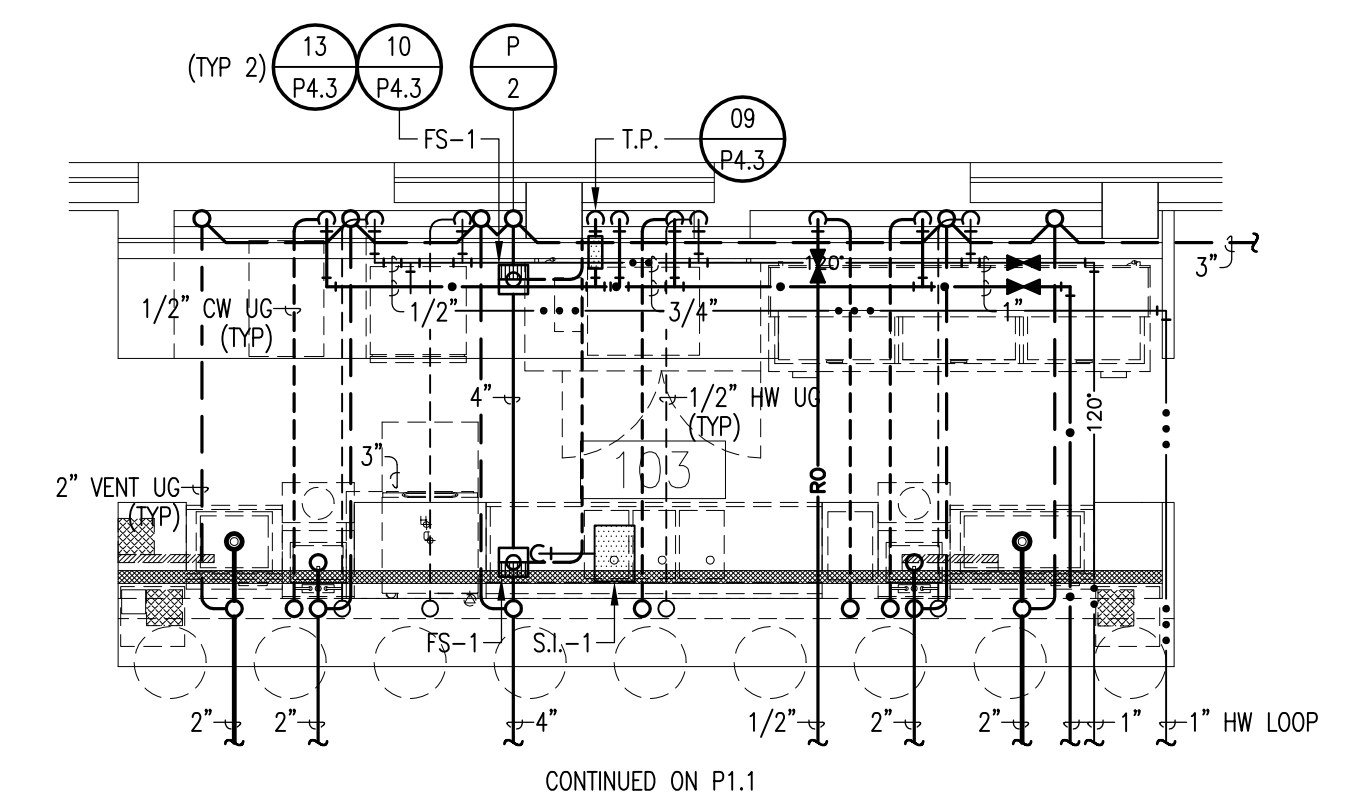
PROJECT #
27074
MAR. 26, 2010
P-1.4

ROOF
PLUMBING PLAN

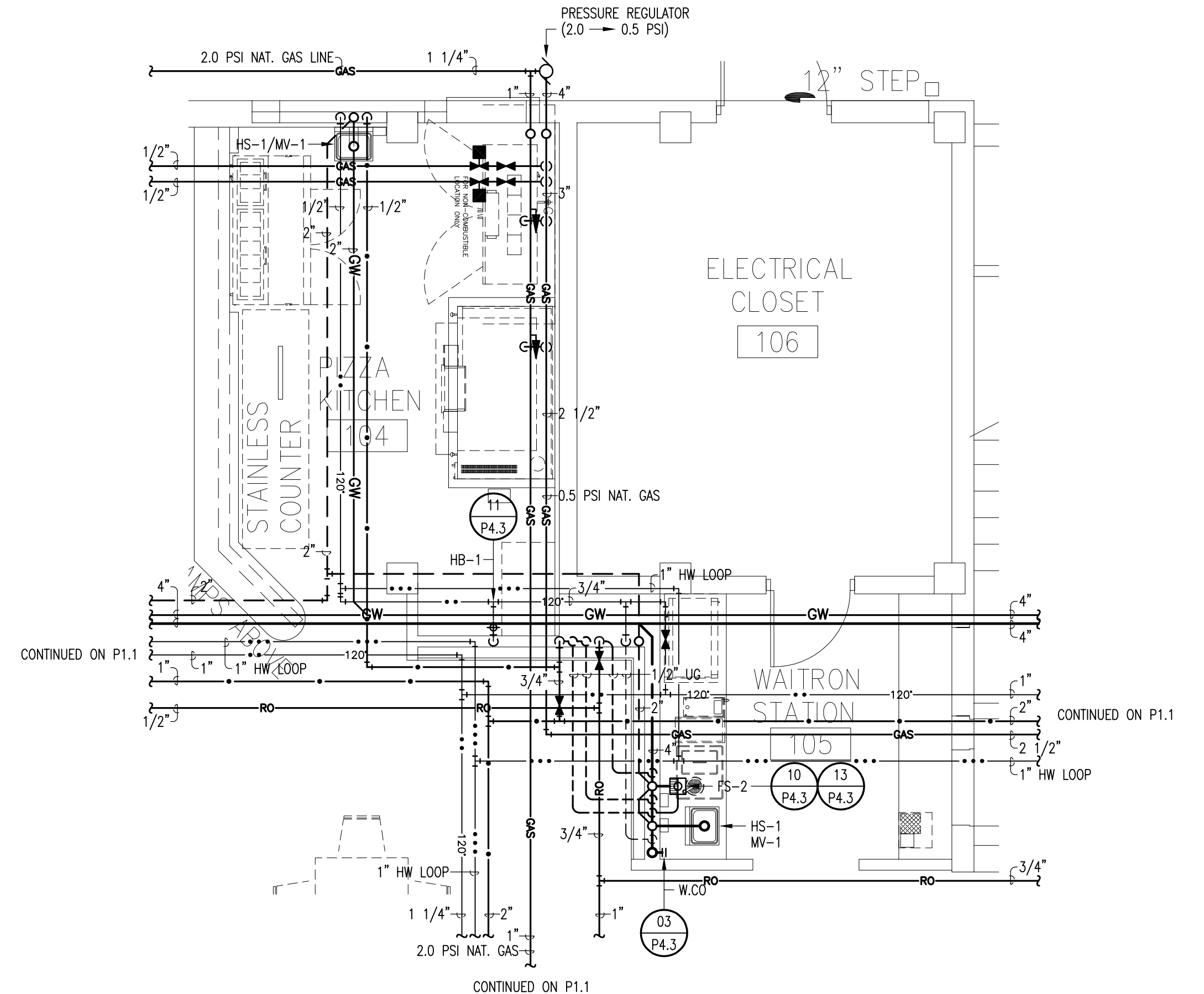
MEGAMORPHOSIS
ARCHITECTURE & INTERIOR DESIGN
1409 N. STUART PLACE RD., SUITE D
PHONE # (956) 428-1779 FAX # (956) 425-5886



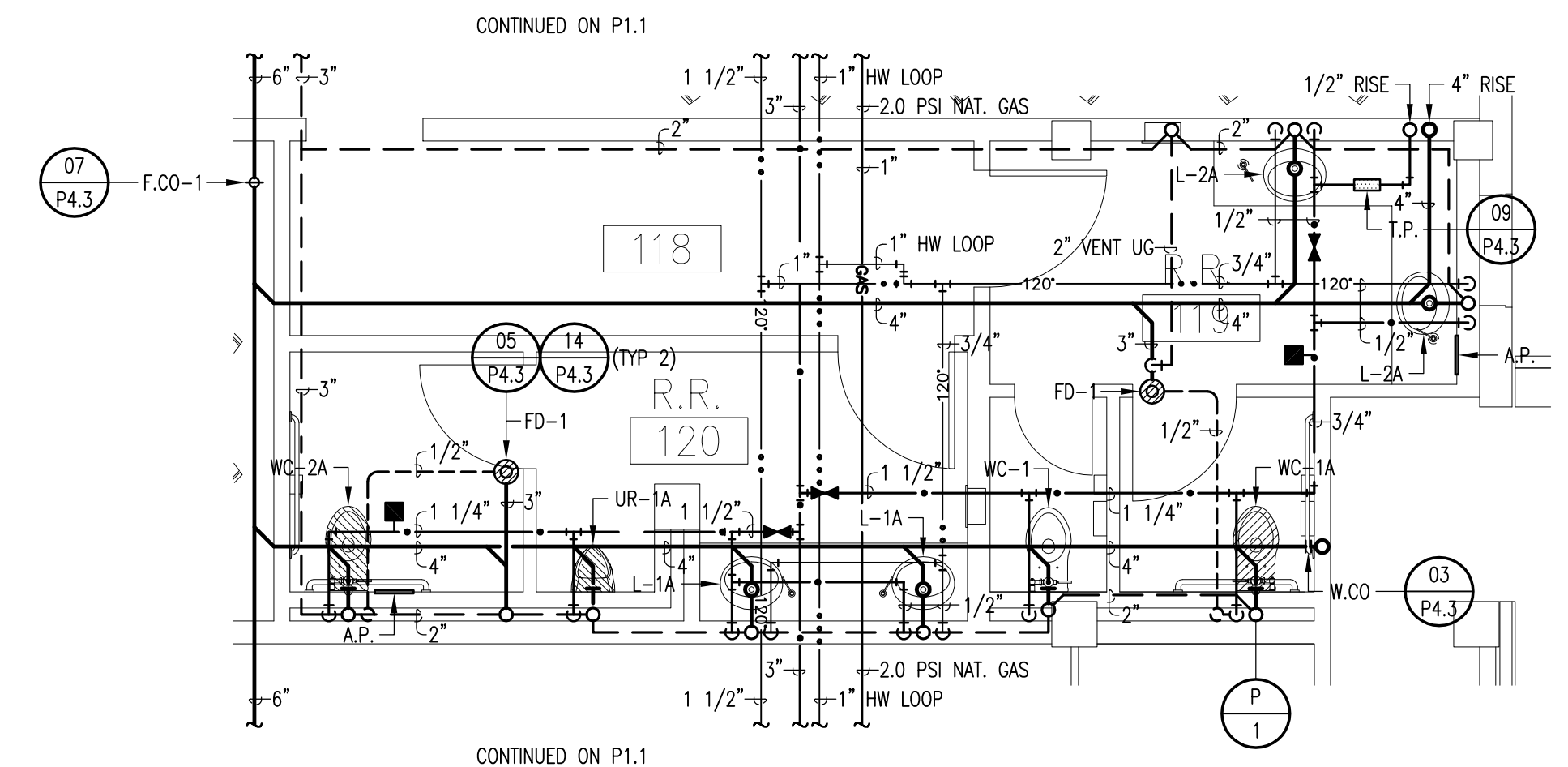
The Reese
Phase I
202 S. 1st. Street
Harlingen, TX



01 ENLARGED PLUMBING PLAN
SCALE: 1/4" = 1'-0"



02 ENLARGED PLUMBING PLAN
SCALE: 1/4" = 1'-0"



03 ENLARGED PLUMBING PLAN
SCALE: 1/4" = 1'-0"

HALFF
5000 WEST MILITARY, SUITE 100
MCALLEN, TEXAS 78503
TEL (956) 664-0286
FAX (956) 664-0282
Half Associates firm registration number is 312

100% PRICING SET

REVISIONS
<p>The Reese Phase I 202 S. 1st. Street Harlingen, TX</p>
<p>FIRST FLOOR PLUMB. ENLARGED PLAN</p>
<p>MEGAMORPHOSIS ARCHITECTURE & INTERIOR DESIGN 1409 N. STUART PLACE RD., SUITE D PHONE # (956) 428-1779 FAX # (956) 425-5886</p>
<p>PROJECT # 27074 MAR. 26, 2010</p>
<p>P-2.1</p>

GENERAL NOTES:

A. FOR A LIST OF GENERAL PLUMBING NOTES, REFER TO PLUMBING SCHEDULES AND NOTES DRAWING, SHEET P-4.2

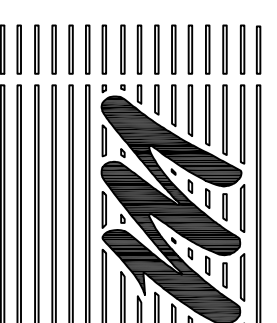
REVISIONS

Harlingen, TX

The Reese
Phase I
202 S. 1st. Street

**FIRST FLOOR
PLUMB. ENLARGED PLAN**

MEGAMORPHOSIS
ARCHITECTURE & INTERIOR DESIGN
1419 N. STUART PLACE RD., SUITE D
PHONE # (956) 428-1179 FAX # (956) 425-5886



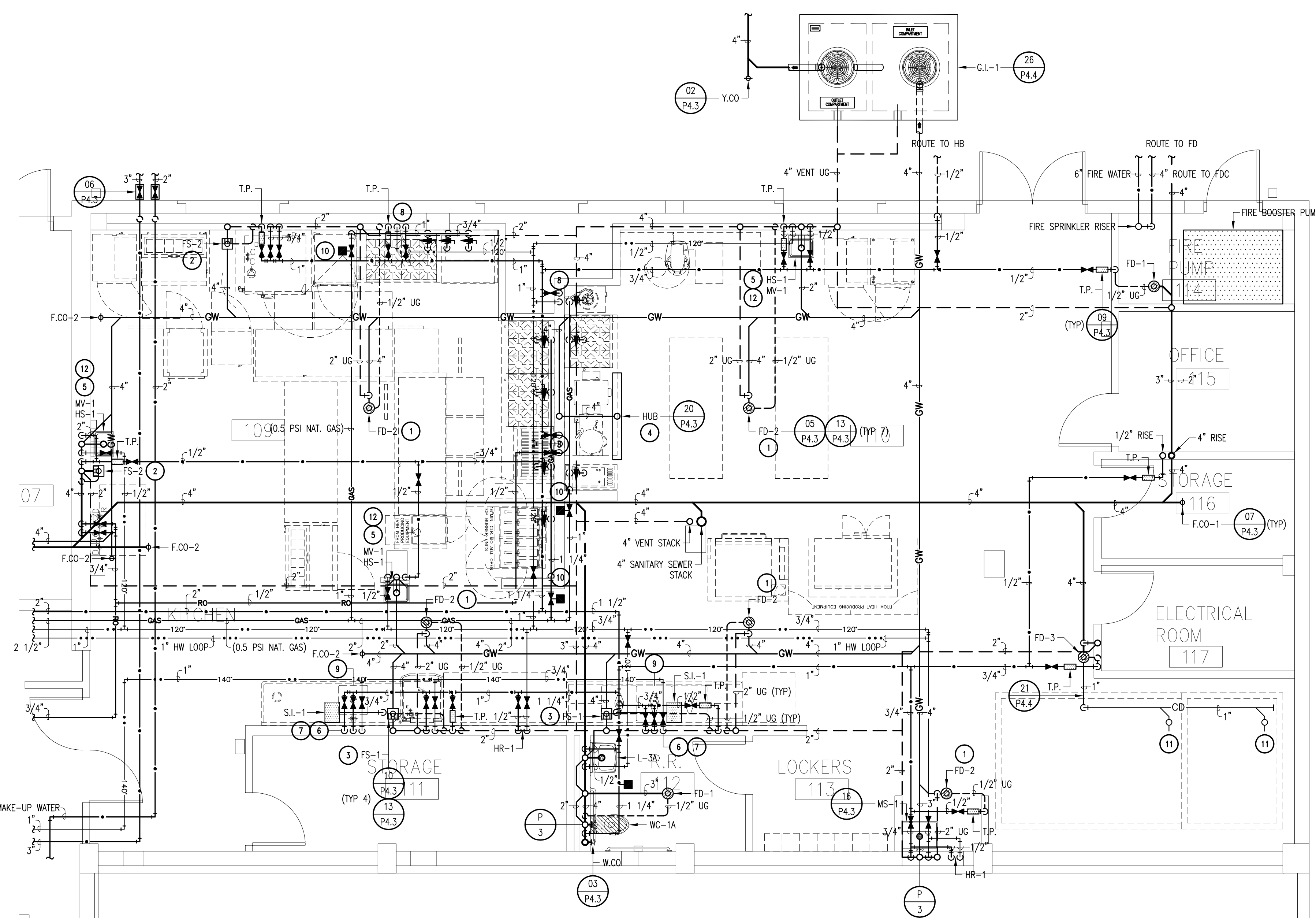
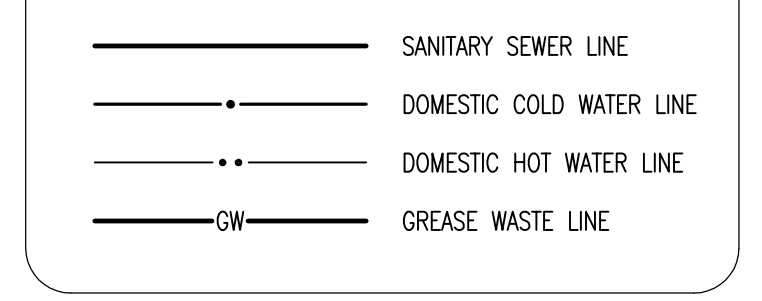
PROJECT #
27074
MAR. 26, 2010

P-2.2

PLUMBING NOTES

ALL PLUMBING OUTLETS AND REQUIREMENTS SHOWN ON THIS PLAN ARE FOR FIXTURES AND EQUIPMENT SPECIFIED AS FURNISHED BY KITCHEN EQUIPMENT SUPPLIER. FOR ANY ADDITIONAL BUILDING PLUMBING REQUIREMENTS, SEE OTHER MECHANICAL PLANS.
ALL DIMENSIONS GIVEN ARE FROM COLUMN CENTERLINES AND/OR FINISHED WALLS AND ARE IN INCHES TO 4'-0". ELEVATIONS GIVEN ARE FROM FINISHED FLOOR. ALL FLOOR DRAINS TO SET 1/2" BELOW FINISHED FLOOR UNLESS OTHERWISE NOTED. DO NOT SLOPE FLOORS SO CLOSE TO DRAINS AS TO CREATE "PITS" OR "DIPS" IN FLOOR. MINIMUM RADIUS OF SLOPE TO BE 24" FROM CENTERLINE OF DRAIN.
PLUMBER TO CONNECT ALL WATER LINES, WASTE LINES, ETC., TO FULLY CONNECT ALL EQUIPMENT AND RUN CONDENSATE LINES FROM UNITS TO DRAINS AND THESE LINES TO BE NO SMALLER THAN THE STUB OUT OF THE FIXTURE. PLUMBER TO PROVIDE GATE VALVES ON ALL WATER AND VALVES, CUT-OFFS, TRAPS, HYDROSTATIC SHOCK ELIMINATORS, PRESSURE REGULATORS AND MATERIAL NECESSARY TO CONNECT ALL LINES, UNLESS OTHERWISE SPECIFIED IN THE ITEM SPECIFICATIONS. FAUCETS, DRAIN OUTLET FITTINGS IN FIXTURES AND SPECIALTY ITEMS ARE TO BE FURNISHED BY KITCHEN EQUIPMENT SUPPLIER AS OUTLINED ON THE ITEM SPECIFICATIONS. ALL WORK TO BE PERFORMED IN FULL ACCORDANCE WITH ALL APPLICABLE CODES RELATING TO INSTALLATION AND HOOK-UP OF EQUIPMENT.

LEGEND



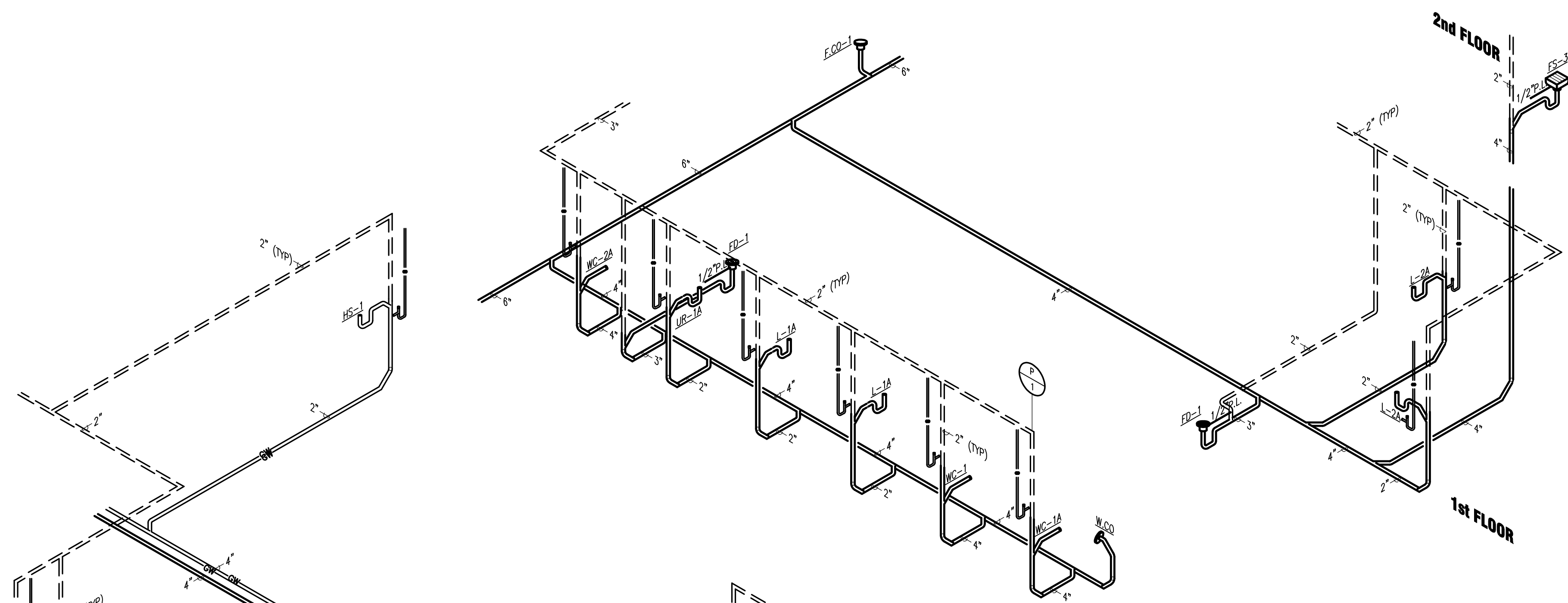
01 ENLARGED PLUMBING PLAN
SCALE: 1/4" = 1'-0"

KEY NOTES:

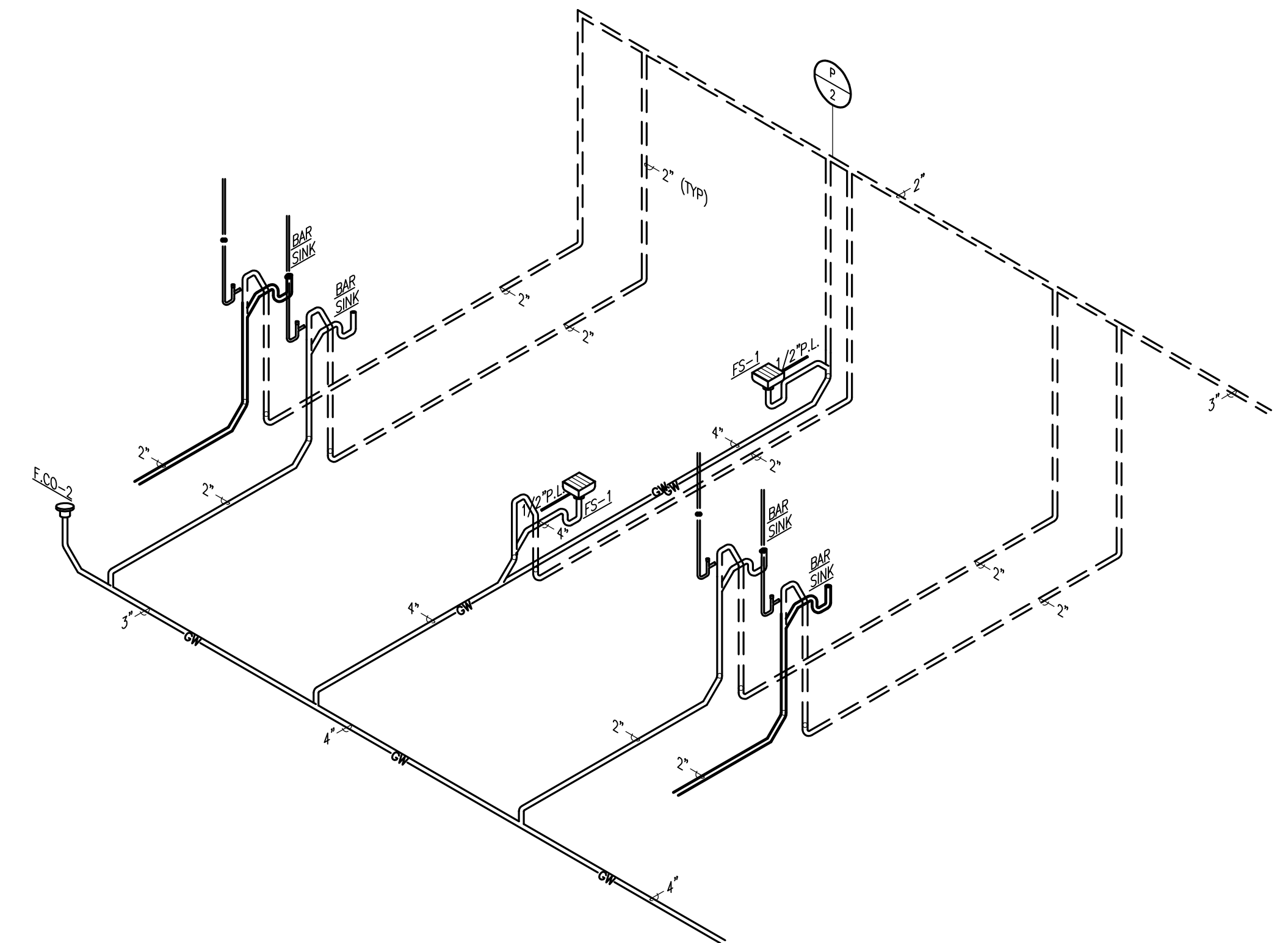
- 4" FLOOR DRAIN, SET 1/2" B.F.F., SEE DETAIL 14, TYPE (FD-2) WITH 1/2" TRAP PRIMER AS REQUIRED.
- 4" FLOOR SINK, 8"x8" WITH 3/4" STAINLESS STEEL GRATE, SET FLUSH WITH FINISHED FLOOR, SEE DETAIL 10, TYPE (FS-2) WITH 1/2" TRAP PRIMER AS REQUIRED.
- 4" FLOOR SINK, 12"x12" WITH 1/2" STAINLESS STEEL GRATE, SET FLUSH WITH FINISHED FLOOR, SEE DETAIL 10, TYPE (FS-1) WITH 1/2" TRAP PRIMER AS REQUIRED.
- 4" HUB DRAIN, SET 6" B.F.F., IN TRENCH DRAIN, SEE DETAIL 20.
- 1/2" C.W./H.W., EL. 16" B.T.C. ON HAND SINK FAUCET.
- 1/2" C.W./H.W., EL. 16" B.T.C. ON SINK FAUCETS.
- 1/2" H.W., EL. 16", B.T.C. ON PRE RINSE SPRAY AND FAUCET ASSEMBLY. PROVIDE FAUCET WITH INTERNAL CHECKS.
- 3/4" C.W./H.W., ON KETTLE FILLER, TILT FRYERS AND TROUGH COLLECTOR.
- 2" DRAIN CONNECTION, EL. 12", B.T.C. ON SINK DRAINS. PLUMBER TO PROVIDE MANFOLD ON SINKS, AND BRANCH ALL INDIRECT DRAIN LINES FROM EQUIPMENT TO NEAREST FLOOR SINK, SEE DETAIL 13.
- PLUMBING CONTRACTOR TO SET SOLENOID VALVE, FURNISHED BY KITCHEN EQUIPMENT SUPPLIER, IN LINE, AS PART OF THE FIRE EXTINGUISHING SYSTEM.
- PLUMBING CONTRACTOR IS TO INSTALL 1" INSULATED COPPER CONDENSATE DRAIN LINES COMPLETE WITH P-TRAPS AND HEAT TAPE WRAP. CONDENSATE DRAIN LINES FOR BOTH THE COOLER AND FREEZER ARE TO BE INSULATED, SEE DETAIL 21.
- PROVIDE SINGLE OUTLET THERMOSTATIC WATER MIXING VALVE, TYPE (MV-1), FOR HAND SINKS AND LAVATORY.
- 3" DRAIN, S.U. 1" B.T.C. ON TROUGH COLLECTOR SYSTEM.
- 3/4" H.W. 180°F WATER MINIMUM 5'-6" A.F.F., B.T.C. ON DISHWASHER (250 GPH AT 20.0 P.S.I.), SEE DETAIL 23.
- NATURAL GAS, LOOPED D.F.A. 1,766,000 MBH, REFER TO GAS RISER DIAGRAM SHEET P-3.2

HALFF
5000 WEST MILITARY, SUITE 100
McALLEN, TEXAS 78503
TEL (956) 664-0286
FAX (956) 664-0282
Half Associates firm registration number is 312

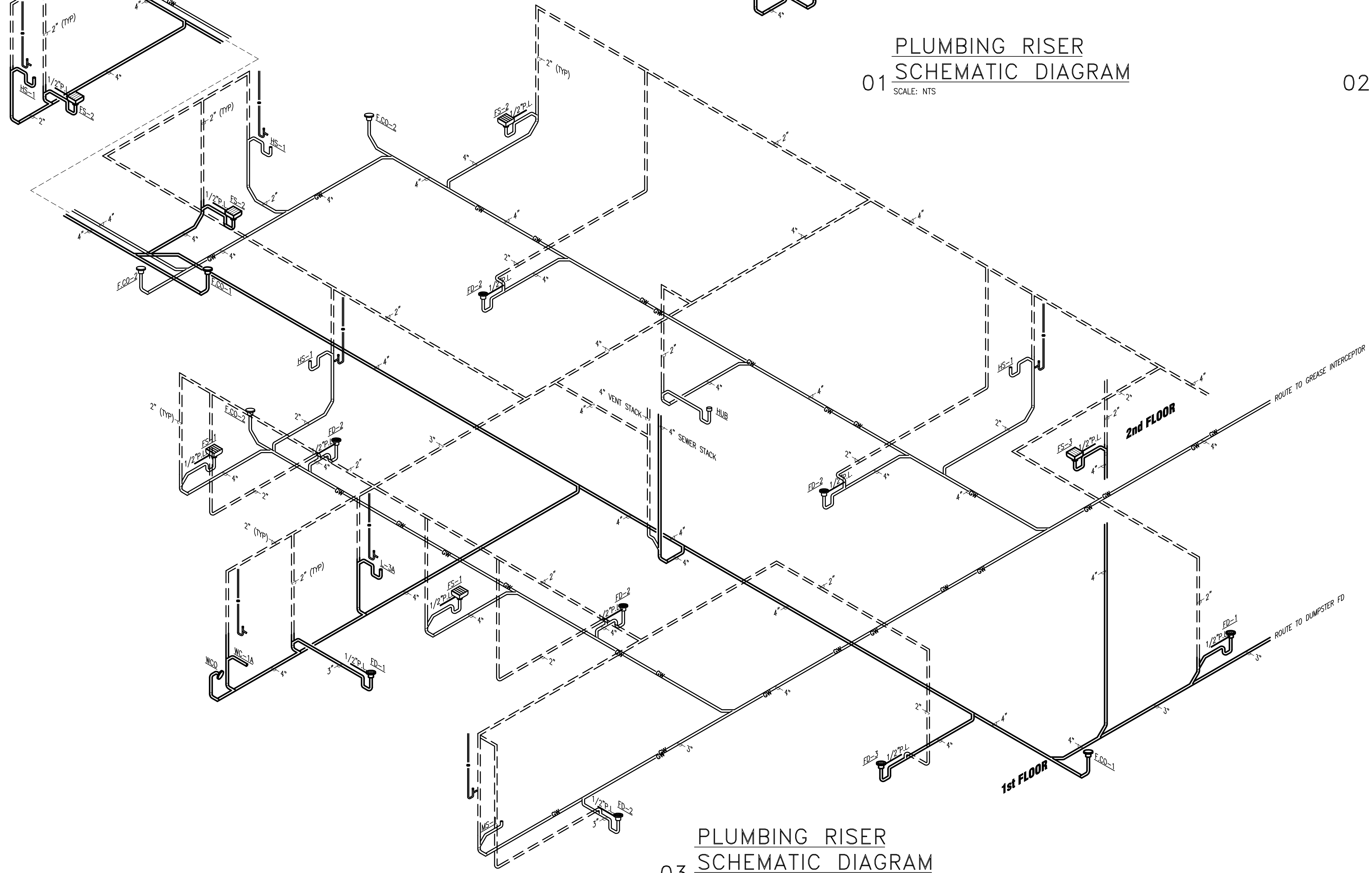
100% PRICING SET



01 PLUMBING RISER SCHEMATIC DIAGRAM
SCALE: NTS



02 PLUMBING RISER SCHEMATIC DIAGRAM
SCALE: NTS



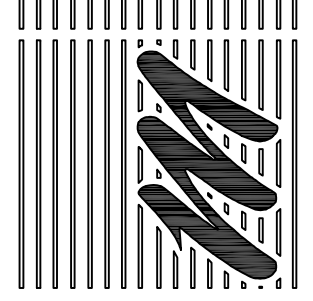
03 PLUMBING RISER SCHEMATIC DIAGRAM
SCALE: NTS

REVISIONS

The Reese
Phase I
202 S. 1st. Street
Harlingen, TX

PLUMBING RISER
SCHEMATIC DIAGRAMS

MEGAMORPHOSIS
ARCHITECTURE & INTERIOR DESIGN
1419 N. STUART PLACE RD., SUITE D
PHONE # (956) 428-1779 FAX # (956) 425-5886

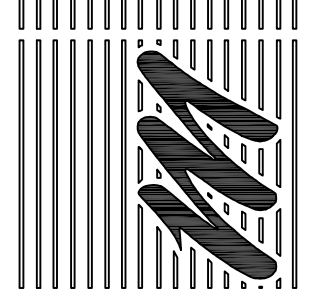


PROJECT #
27074
MAR. 26, 2010

P-3.1

HALFF
5000 WEST MILITARY, SUITE 100
McALLEN, TEXAS 78503
TEL (956) 664-0286
FAX (956) 664-0282
Half Associates firm registration number is 312

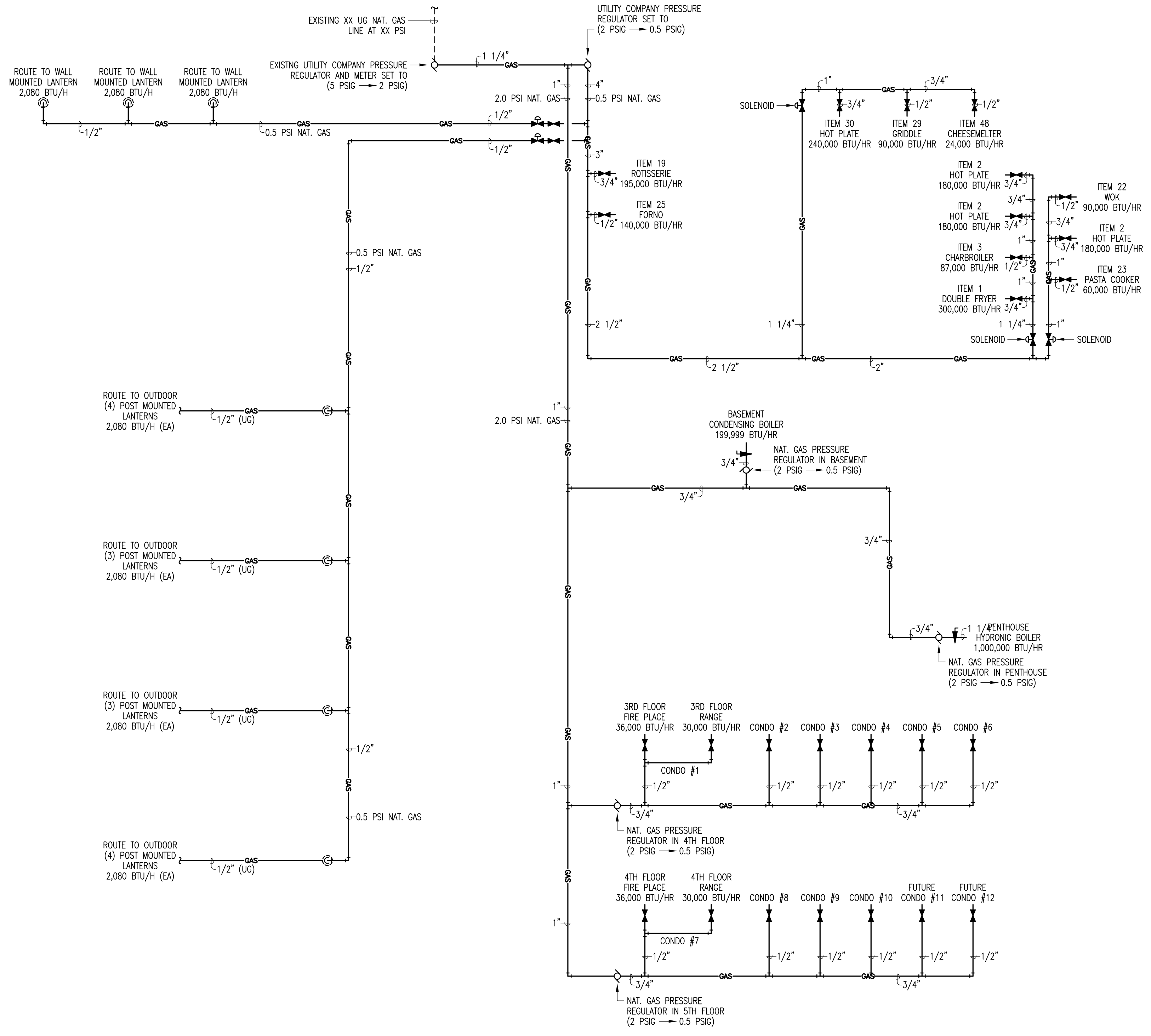
100% PRICING SET



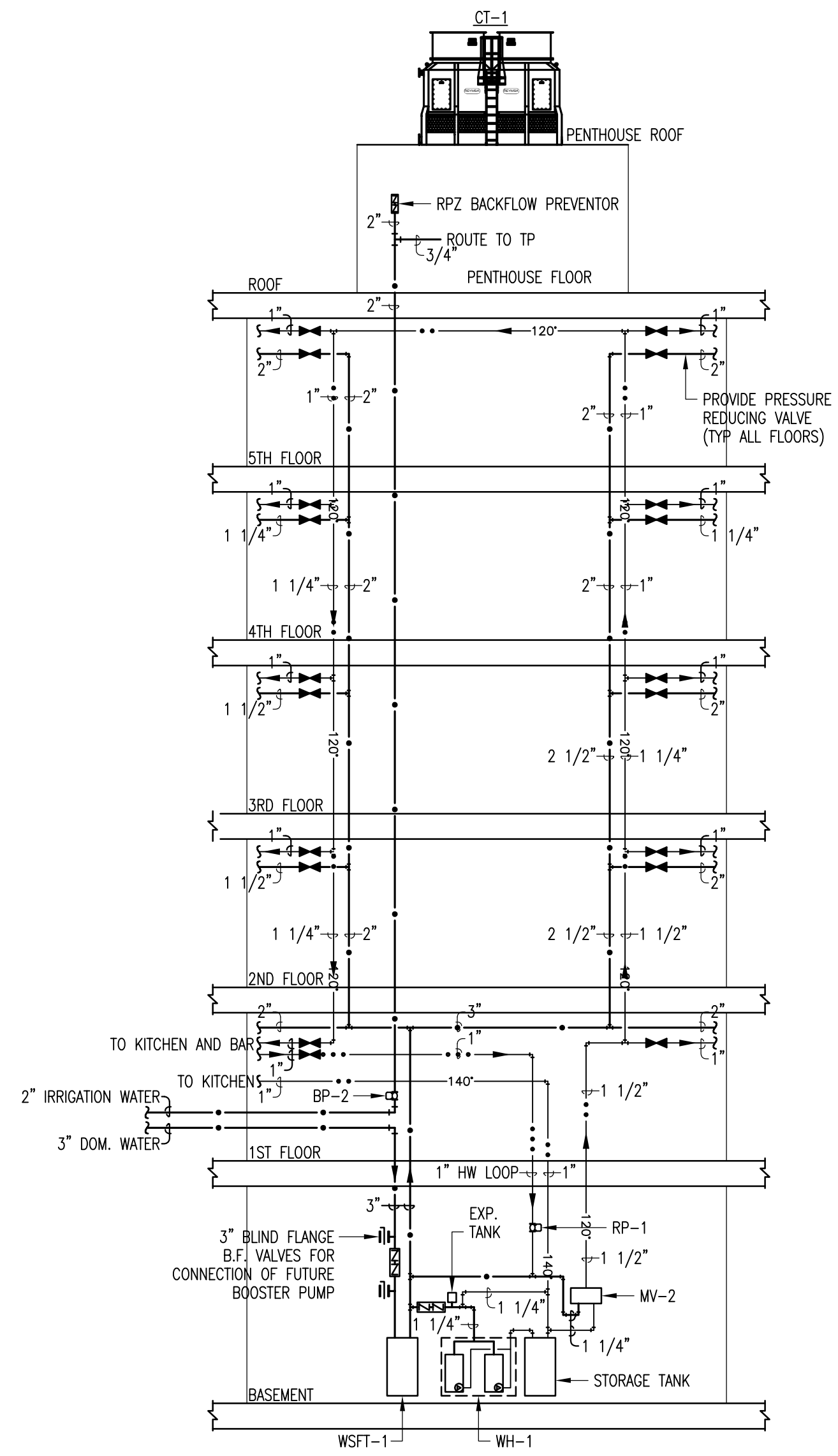
100% PRICING SET



5000 WEST MILITARY, SUITE 100
McALLEN, TEXAS 78503
TEL (956) 664-0286
FAX (956) 664-0282
Half Associates firm registration number is 312



02 NAT. GAS RISER SCHEMATIC DIAGRAM
SCALE: NTS



01 WATER RISER SCHEMATIC DIAGRAM
SCALE: NTS